



# C A M P A I G N   C A S E   S T A T E M E N T



STEWARDSHIP *for*  
**SAINTS &  
SCHOLARS**

*The campaign for Catholic education  
in the Diocese of Lansing*



# CAMPAIGN PRAYER

Lord, everything we have is a gift from you.  
You call us to receive your gifts with thanks,  
to develop these gifts fully, and to  
share them generously.

Through the *Stewardship for Saints and Scholars*  
campaign help every young person in the Diocese  
of Lansing see your truth, beauty, and goodness;  
help families to raise their children in the Faith;  
and help parishes make a fully Catholic  
education available to all.

May the work of this campaign bear abundant  
fruit in the Saints and Scholars you are  
raising up for the future.

We ask these blessings through Christ our Lord.

***Amen.***



***“In the present age, we seek to form and inspire young people who will bring a new order to our culture so that the salvation won for us in Jesus Christ can be shared by our society and the world.”***

BISHOP EARL BOYEA, AUGUST 2023

Bishop Boyea’s words – and the determination behind them – are the framework of our new capital campaign for Catholic education. We are calling this effort *Stewardship for Saints and Scholars*, a theme that embodies a sincere commitment to prayerful resolve in fulfilling Bishop Boyea’s vision for our children.

**We need to better help our families raise happy and holy young people who are capable of bringing the love and truth of Jesus Christ to contemporary society in a way that is intellectually coherent, culturally credible and socially compassionate. Faith and reason. Heart and mind. Saints and scholars.**

The *Stewardship for Saints and Scholars* campaign will make Catholic schools across the Diocese of Lansing ever more on-mission, affordable and accessible, ensuring that an authentically Catholic education is available to all families who desire it for their children. This endeavor requires clear and consistent catechesis on two key principles of Catholic teaching:

***The responsibility of parents and Church:***

The primary educator of a child is his or her parents. Catholic parents are obliged to provide for the Catholic education of their children. As our mother and teacher, the Church has a duty to help parents provide that Catholic education, primarily through the provision and maintenance of Catholic schools. This also involves supporting Catholic parents who choose to homeschool or enroll their children in religious education programs at their parish.

***The joy of stewardship:***

Stewardship means recognizing that everything we have and everything we are is a gift from God and, thus, being grateful and generous in response to that divine beneficence. Our Catholic forebears sacrificed and, often, suffered much for their faithfulness to Jesus Christ and His Holy Church. They did so for the love of us. It is now our sacred duty and joy to give of our time, talent and treasure for our children, grandchildren and generations hence.



# DID YOU KNOW?

## School Year 2023-24



Enrollment has increased 10% over the past three years.



More than 8,400 students served in our 36 Catholic schools.



More than \$650,000 in financial aid distributed to families serving 700 students.



15% of the financial aid need is met.



18 of our 27 current seminarians attended Catholic schools or were homeschooled.



First new Catholic school in 20 years opened at St. Andrew the Apostle in Saline in fall 2023.

## CAMPAIGN GOAL: \$70 MILLION

### WHAT ARE THE CAMPAIGN PRIORITIES?

#### *On Mission:*

Attract, form, train and retain excellent and faithful teachers and administrators.

#### *Affordable:*

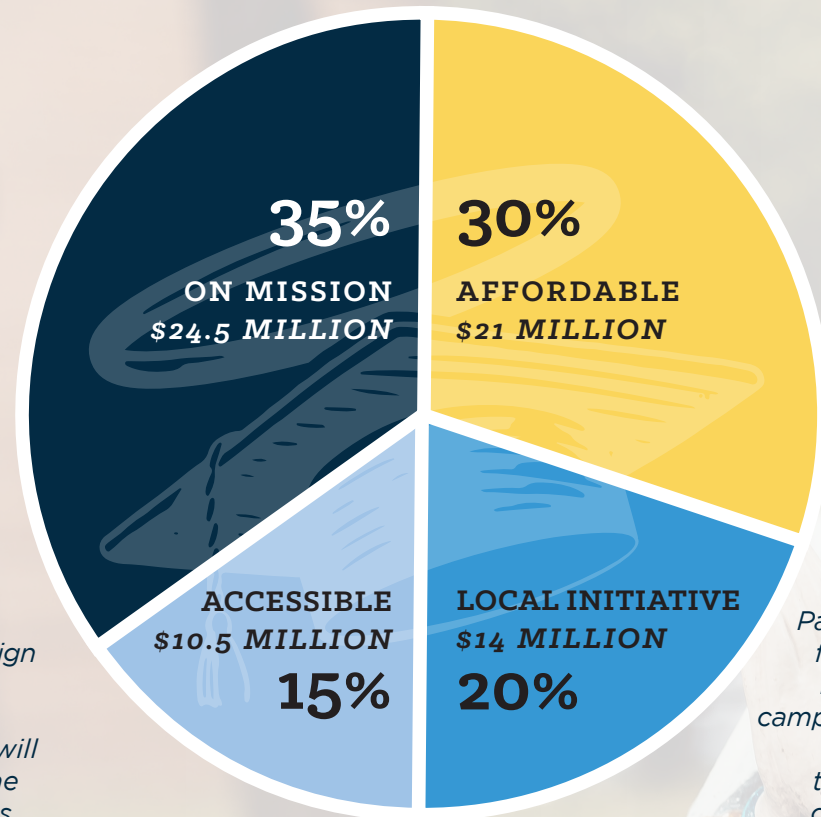
Grow tuition assistance for current and new families.

#### *Accessible:*

Assist students with special needs. Enhance services at our regional high schools.

#### *Local Initiatives:*

Intended to bolster parishes, schools, homeschool programs, religious ed and faith formation.



*The diocese is covering all campaign expenses. That means 100% of all gifts and pledges will directly support the campaign priorities.*

*Parishes, schools and families are the sole beneficiaries of this campaign. No campaign funds will be used to support diocesan offices or programs.*

### **A Catholic school is Catholic because:**

- It undertakes to educate the whole child, addressing the requirements of his or her natural and supernatural perfection.
- It provides an education in the intellectual and moral virtues.
- It prepares for a fully human life at the service of others and for the life of the world to come.

*The Holy See's Teaching on Catholic Schools, 2006*



**At a time when the secular world is pushing God and religion out of the public square it is more urgent and more important than ever to ensure that we have Catholic schools that are affordable, available and accessible to help our families with their most important job – to raise up saints and scholars. Our families need it, our parishes need it, and our world needs it!"**

TOM MALONEY, SUPERINTENDENT OF CATHOLIC SCHOOLS

*“Although we do not have children, we both recognize the positive differences Catholic schools make in forming faith-filled lives for citizens of the Church and for our world. Therefore, we are enthusiastically supporting this effort to make Catholic schools affordable in all our parishes and hope that many others will join us!”*

REBECCA BOYLAN AND THOMAS SIDLIK,  
MEMBERS OF ST. FRANCIS OF ASSISI PARISH, ANN ARBOR



*Listen to a Catholic high school president describe his school's faith mission. Scan this QR code on your smartphone to access it.*

## ON MISSION | \$24.5 Million (35%)

**Attract, form, train and retain excellent, faithful teachers and administrators at parish elementary and diocesan high schools.**

The teachers and administrators in our Catholic schools are incredibly valuable. Yes, they educate our children in the academic fundamentals. Yet we are further blessed with talented teachers and staff dedicated to modeling gospel values while bringing out the best in each student.

**Our planning study feedback confirmed that attracting and keeping our teachers is the highest priority for this campaign.**

*Keeping quality educators is challenging in any school setting – public or private, secular or religious.*

- 44% of all teachers, public and private, leave within the first five years in the profession.
- In general, newer teachers are 2½ times more likely to quit than those who are tenured.
- The Diocese of Lansing replaces an average of 50 teachers per year, about 9% of all teachers.

2023-24	National & State of Michigan	Diocese of Lansing
Starting average teacher salary	\$40,000	\$30,000
Average teacher salary	\$63,000	\$47,000

*The diocese has developed two strategies to attract, form, train and retain excellent and faithful teachers and administrators at our Catholic schools.*

### Excellent Educators Fund and St. Elizabeth Ann Seton Endowment

\$20 million endowment to secure the future, allowing for \$4.5 million to address immediate needs.

*“Sign, Train and Retain” program offers new hires:*

- A signing bonus of up to \$6,000 over three years.
- A three-year training program.

*The “Invest in the Best” retention program offers all teachers and administrators:*

- Retention bonuses of up to \$3,000 every three years.
- Yearly formation grants.





*It is an outstanding apostolate of hope. Indeed, everything possible must be done, in cooperation with the wider community, to ensure that (Catholic schools) are (affordable) to people of all social and economic strata. No child should be denied his or her right to an education in faith, which in turn nurtures the soul of a nation.”*

POPE BENEDICT XVI

## **AFFORDABLE | \$21 Million (30%)**

***To substantially grow financial assistance available to current and new families.***

The purpose of Catholic schools is first to catechize our children and to provide an opportunity for evangelization. The effects of Catholic schools are clear: Children who attend them are much more likely to remain Catholic later in life, attend Mass regularly and practice their faith as adults.

It's apparent that Catholic education is crucial to our mission to “form communities of missionary disciples who Go Announce the Gospel of the Lord.” The most common obstacle to parents enrolling their children in a Catholic school (where one is available) is tuition. From 2020 to 2023, the total need from all FACTS applications increased by 74%.

We seek to substantially grow the financial aid endowment fund created during the *Witness to Hope* campaign to allow the distribution of more than \$1.5 million in aid each year to assist more families. We also will establish “New Family Grants” that will help make Catholic education a reality for children not already enrolled in our schools. Both of these efforts will significantly lower the financial barrier to a Catholic education.

***Increasing the Catholic Schools Financial Aid Endowment by \$19 million will:***

- Increase current endowments by over 150%.
- Increase grant amounts to families.
  - Grades K-8: from \$750 to as much as \$1,500 (35% of average 2023-24 tuition)
  - Grades 9-12: from \$1,000 to as much as \$3,000 (30% of average 2023-24 tuition)

***With a “New Family Grant” fund of \$2 million, we will be able to offer:***

- Grants up to \$1,000 for children in grades K-8.
- Grants up to \$2,000 for children in grades 9-12.



***Scan this QR code to see and hear what it means to a Catholic mother and grandmother to have an affordable Catholic education for her family.***





Scan this QR code to see and hear one family's story of their child's ability to receive a Catholic education regardless of special needs.

## ACCESSIBLE | \$10.5 Million (15%)

**Improve assistance for children with special needs while also providing funds to enhance services through the four regional diocesan high schools.**

The number of children with special needs continues to grow as well as their families' desire to provide a Catholic education. We want our Catholic schools to be more able to serve these families and students. The Accessible initiative will expand services to children with special needs through the "Serving God's Children" Fund. Additionally, the Accessible initiative will help to address some major projects at our four diocesan high schools. Our high schools serve as cornerstones for our Catholic schools, and each has opportunities for enhancements to further their mission and enhance accessibility regionally.

### **"Serving God's Children" Fund of \$2.5 million**

- Up to \$100,000 per year in grants to schools and parishes to serve children with special needs.
- Up to \$12,500 per year in grants for training for teachers and resources to serve children with special needs.

### **Regional Catholic High School Enhancements of \$8 million**

- Up to \$2 million for each of the four regional Catholic high schools.

“Wash the plate. Not because it's dirty or because someone told you to do it, but because you love the person who will use it next.”

ST. TERESA OF CALCUTTA



***“Let the children come to Me;  
do not prevent them;  
for the kingdom of God  
belongs to such as these.”***

MARK 10:14





Scan this QR code to see and hear how one parish's efforts complement families' commitment to passing on the faith at home.



## LOCAL INITIATIVE | \$14 Million (20%)

**Invest in local parish school, religious education/faith formation, parish sponsored homeschool initiatives or other urgent, local needs.**

Responses gleaned during the planning study indicated a desire to also include support for religious education, faith formation and homeschool families. The decision was then made to broaden the scope of the campaign. The spirit of this initiative, as with the entire *Stewardship for Saints and Scholars* campaign, is to expand the catechesis and evangelization opportunities for our children. While these funds are intended for projects relating to their Catholic schools and/or religious education/faith formation and/or parish sponsored homeschool efforts, pastors along with parish leadership may use their discretion and ultimately determine the best use of these funds based on the most urgent needs of the parish.

### Local Initiatives

- Each parish will receive 20% of the funds collected from its parishioners for its own local needs. Once a parish has reached its target, 100% of funds collected over the target will be returned to the parish.

“We ought, therefore, to do all that lies in our power to maintain the teaching of Christian doctrine with full vigor, and where such is neglected, to restore it.”

ST. PIUS X, “ACERBO NIMIS”





### ***What is a capital campaign?***

A capital campaign is an effort to raise money in a fairly brief period of time to pay for a significant project or to build up a large fund for future use. For a Catholic diocese or parish, this refers to gifts and pledges over and above parishioners' regular giving to the Sunday collection. Parishioners will be invited to pledge their faithful generosity over a five-year period.

### ***Why is the diocese conducting a campaign now?***

Under the dynamic leadership of Bishop Boyea, the diocese is now on firm footing and the stability of our parishes is a blessing. However, extensive investment is needed to continue to build our schools, support our teachers and increase faith formation programs to form saints and scholars. After years of listening, planning and the positive results of a study, Bishop Boyea determined that now is the time to inspire greater generosity from God's people, to move our local Church from maintenance to mission.

### ***What are the parishes' responsibilities?***

Each pastor will appoint key volunteers who will work with the diocese and the Steier Group to form a campaign team. The parish team will help with campaign events and make personal visits to other parishioners to follow up on requests for gifts. Every parish will determine the "local initiatives" to which the parish share of funds raised will be directed.

### ***When will the campaign take place?***

Preparations for the campaign began in May 2023, and the active campaign will take place in three waves, the last of which will conclude in late 2025.

### ***How is this campaign being funded?***

The diocese is covering all campaign expenses. That means 100% of all gifts and pledges will directly support the campaign priorities. Parishes, schools and families are the sole beneficiaries of funds raised through this campaign. No campaign funds will be used to support diocesan offices or programs.

### ***Does this take the place of the Diocesan Services Appeal?***

No. The DSA is an annual appeal that supports the ongoing, day-to-day work of the Church. That funding remains a critical need even as the campaign provides funding for extraordinary priorities. Both types of gifts are necessary and responsible uses of the financial gifts we are given by God.

### ***We just finished a diocesan campaign. Why do we need another one?***

Thank you to all those who gave to the *Witness to Hope* campaign! It was hugely successful in helping parishes with their projects and setting up endowments at The Catholic Foundation that support education, seminarians, charities and other purposes of the wider Church. However, the need for support of Catholic education has grown rapidly and is an incredibly urgent priority. The *Stewardship for Saints and Scholars* campaign is our effort to address that growing need.





There are many options to help meet your preferences while supporting the *Stewardship for Saints and Scholars* campaign in a meaningful way. Selecting the best gift plan depends on your personal financial situation and goals. You may want to consider stretching pledges over a five-year period to maximize the total amount of support. This commitment can be fulfilled through monthly, quarterly, semiannual or annual installments.

Pledges are commitments made in good faith. Because tax laws change and each situation is unique, donors are encouraged to consult with their financial adviser to determine which method of contributing is most beneficial.

We encourage all donors to consider a 10-20% initial investment to begin your commitment to ensure a bright future for Catholic schools and education that is *On Mission, Affordable and Accessible* for our families and students.

**Check/Credit Card/Automatic Payment** are the most common giving methods and will make funds immediately available to address the initiatives of *Stewardship for Saints and Scholars*. Donating is as simple as writing a check or setting up automatic electronic payment on your credit card or from your bank account. Checks should be made payable to **“Stewardship for Saints and Scholars”** and mailed to: The Catholic Foundation, 101 S. Washington Square, Suite 620, Lansing, MI 48933. To make a gift or pledge electronically via credit card or to set up an automatic payment, visit our secure online giving page at [www.dioceseoflansing.org](http://www.dioceseoflansing.org).

#### **Donor-Advised Funds**

Donors also can utilize donor-advised funds for the benefit of the campaign. Please contact The Catholic Foundation at 517-253-8745 for information about how to make a gift from your donor-advised fund.

#### **Gifts of Securities**

Gifts of stocks, bonds or mutual funds are encouraged when supporters want to make a charitable gift and avoid capital gains tax. Please contact The Catholic Foundation at 517-253-8745 for delivery details to share with your brokerage provider to complete your gift to the *Stewardship for Saints and Scholars* campaign.

#### **Direct Qualified Charitable Distribution from a Retirement Account**

Benefactors can make charitable gifts using funds from tax-deferred individual retirement accounts (IRAs). Donors may use this strategy to satisfy part or all of their required minimum distribution and lower overall tax liability to benefit the *Stewardship for Saints and Scholars* campaign. Please contact The Catholic Foundation at 517-253-8745 for information about how to make a qualified charitable distribution from your IRA.

#### **Planned Gifts**

Planned gifts provide opportunities to make a meaningful commitment to the campaign now as part of your financial and estate planning. Such gifts can allow donors to accomplish charitable giving goals and take advantage of tax laws. Opportunities may include:

- Bequests from a will or a living trust
- Life insurance
- Real estate
- Designating The Catholic Foundation of the Diocese of Lansing as a beneficiary (for example, brokerage transfer on death agreement, retirement account beneficiaries or life insurance beneficiaries)
- Various trust options (for example, a charitable lead trust)

*This information is not intended as legal advice. You are advised to consult your own qualified professional adviser for specific recommendations.*

**Stewardship** is our grateful response in recognizing and receiving God's gifts of our *time, talent and treasure*, and sharing these gifts in love with God and neighbor. Please *pray* for the success of the effort, consider a gift of your talent by serving as a *volunteer* at your parish and/or school and thoughtfully discern a sacrificial *gift*.

## BUDGETING YOUR GIFT OF TREASURE (Over 5 Years)

Total Gift	Initial 10% Investment	Remaining Balance	Annual	Semi- Annual	Quarterly	Monthly
\$2,500,000	\$250,000	\$2,250,000	\$450,000	\$225,000	\$112,500	\$37,500
\$1,000,000	\$100,000	\$900,000	\$180,000	\$90,000	\$45,000	\$15,000
\$750,000	\$75,000	\$675,000	\$135,000	\$67,500	\$33,750	\$11,250
\$500,000	\$50,000	\$450,000	\$90,000	\$45,000	\$22,500	\$7,500
\$250,000	\$25,000	\$225,000	\$45,000	\$22,500	\$11,250	\$3,750
\$100,000	\$10,000	\$90,000	\$18,000	\$9,000	\$4,500	\$1,500
\$75,000	\$7,500	\$67,500	\$13,500	\$6,750	\$3,375	\$1,125
\$50,000	\$5,000	\$45,000	\$9,000	\$4,500	\$2,250	\$750
\$25,000	\$2,500	\$22,500	\$4,500	\$2,250	\$1,125	\$375

“Each one must do just as he has purposed in his heart, not grudgingly or under compulsion, for God loves a cheerful giver.”

2 CORINTHIANS 9:7

## CAMPAIGN LEADERSHIP

Most Reverend Earl A. Boyea,  
*Bishop of Lansing*

### CLERGY COMMITTEE

Rev. William Ashbaugh

Rev. Robert Bacik

Rev. Matthew Bonk

Rev. Paul Erickson

Rev. Ed Fride

Rev. Todd Koenigs knecht

Rev. Joseph Krupp

Very Rev. Tim MacDonald, *Chair*

Rev. Tim Nelson

Dcn. Ken Preiss

Rev. Karl Pung

Rev. Jim Rolph

### EXECUTIVE COMMITTEE

Matt Hufnagel, *President,*  
*The Catholic Foundation*

David Kerr, *Director of Communications*

George Landolt, *Chief Financial Officer*

Very Rev. Tim MacDonald, *Vicar General*

Tom Maloney, *Superintendent of*  
*Catholic Schools*

### GENERAL CHAIRS

Karen and Duane Church

Elaine Crosby

Steve and Melinda Roznowski

Ken Weingartz

### HONORARY CHAIRS

Rev. Tom Firestone

Thomas S. Monaghan

Tim and Shann Patton

Brig and Francine Sorber

Joseph and Kathleen Thorrez

### CAMPAIGN CABINET

Chris Abood

Joe and Candace Dunigan

John and Karen Dunlap

Glen and Jill Feldpausch

Mike and Emily Hanley

Mike and Teresa Hull

Gary and Loretta Kralik

Andy and Lisa Shmina

### CAMPAIGN COUNSEL

Steier Group



*Catholic schools are a shining light in the Diocese of Lansing. Our communities are blessed with these institutions that offer a Christ-centered environment for students. However, we cannot rest on our laurels. Our schools must remain vibrant, affordable, and dedicated to the mission of Jesus Christ. That's where the Stewardship for Saints & Scholars campaign comes in. By supporting this campaign, parents, schools, and parishes will work together to help students thrive spiritually, intellectually, and emotionally. Let's join hands to provide the best education for our future leaders!"*

ELAINE CROSBY, GENERAL CHAIR



STEWARDSHIP *for*  
**SAINTS &  
SCHOLARS**

*The campaign for Catholic education  
in the Diocese of Lansing*

*The Catholic Foundation of the Diocese of Lansing  
administers the campaign on behalf of the diocese.*

*Donor Services staff of The Catholic Foundation are available  
to assist at 517-253-8792 or [donorservices@dioceseoflansing.org](mailto:donorservices@dioceseoflansing.org).*

**DIOCESE OF LANSING**

228 N Walnut St • Lansing, MI 48933

[donorservices@dioceseoflansing.org](mailto:donorservices@dioceseoflansing.org) • 517-253-8792