

## Hosanna

### Refrain



Ho - san - na, ho - san - na! Ho - san - na in the high - est!

### Verses



1. Bless - ed is he, Je - bless - ed is he; Ho -  
2. Chil - dren of Je - ru - sa - lem; Ho -  
3. Sing your praise, sing your praise: Ho -



san - na! Ho - san - na! He who comes in the  
san - na! Ho - san - na! Chil - dren, wel - come  
san - na! Ho - san - na! Hail the dawn of e -



name of the Lord; Ho - san - na! Ho - san - na!  
Christ your King; Ho - san - na! Ho - san - na!  
ter - nal life; Ho - san - na! Ho - san - na!


# KÝRIE

*Cantor, then assembly:*



Ký - ri - e, e - lé - i - son.

*Cantor, then assembly:*



Chri - ste, e - lé - i - son.

*Cantor, then assembly:*



Ký - ri - e, e - léi - son. Ký - ri - e, e - léi - son.



Ký - ri - e, e - lé - i - son.

# PSALM 22: PALM SUNDAY OF THE PASSION OF THE LORD, ALL YEARS

Sarah Hart



The musical notation is written on a single staff with a treble clef, a key signature of one flat (B-flat), and a 3/4 time signature. The melody consists of the following notes: G4 (quarter), A4 (quarter), Bb4 (quarter), C5 (quarter), Bb4 (quarter), A4 (quarter), G4 (quarter), F4 (quarter), E4 (quarter), D4 (quarter), C4 (half), B3 (half). The lyrics are printed below the staff, aligned with the notes.

**R. My God, my God, why have you a - ban - doned me?**

Text © 1969, 1981, 1997, ICEL. All rights reserved. Used with permission.  
Music © 2016, Sarah Hart. Published by OCP. All rights reserved.



## LENTEN GOSPEL ACCLAMATION

4/4

Praise and hon - or to you, O Lord, O Lord.

The first line of musical notation is in 4/4 time. It begins with a treble clef and a 4/4 time signature. The melody consists of quarter notes: G4, A4, B4, C5, B4, A4, G4, F4, E4, D4. There are slurs under the notes for 'hon - or' and 'O Lord, O Lord'.

Praise and hon - or to you, Lord Je - sus Christ.

The second line of musical notation continues the melody. It starts with a treble clef. The notes are: G4, A4, B4, C5, B4, A4, G4, F4, E4, D4. There is a slur under the notes for 'hon - or' and a final quarter note D4 with a fermata.

Text: ICEL, © 1969

Music: Based on WONDROUS LOVE, Stephen Pishner, © 1998, GIA Publications, Inc.

**How Beautiful**  
Twila Paris



# Holy, Holy, Holy



Ho - ly, Ho - ly, Ho - ly Lord,  
Lord God of hosts. Heav - en and earth are full of your  
glo - ry. Ho - san - na, ho - san - na, ho -  
san - na in the high - est. Ho - san - na, ho -  
san - na, ho - san - na in the high - est.  
Bless - ed is he who comes in the name of the  
Lord. Ho - san - na, ho - san - na, ho -  
san - na in the high - est. Ho - san - na, ho -  
san - na, ho - san - na in the high - est.



## MEMORIAL ACCLAMATION A

We pro-claim your Death, O Lord, and pro -  
fess your Res - ur - rec - tion un - til you come a - gain.

Text: ICEL, © 2010

Music: *The Glendalough Mass*, Liam Lawton; arr. by Paul A. Tate, © 2010, GIA Publications, Inc.

## MEMORIAL ACCLAMATION B

When we eat this Bread and drink this Cup, we pro -  
claim your Death, O Lord, un - til you come a - gain.

Text: ICEL, © 2010

Music: *The Glendalough Mass*, Liam Lawton; arr. by Paul A. Tate, © 2010, GIA Publications, Inc.

## MEMORIAL ACCLAMATION C

Save us, Sav-ior of the world, save us, Sav-ior of the  
world, for by your Cross and Res - ur - rec - tion  
you have set us free, you have set us free.

Text: ICEL, © 2010

Music: *The Glendalough Mass*, Liam Lawton; arr. by Paul A. Tate, © 2010, GIA Publications, Inc.

# Amen

A musical score for the word "Amen" in G major (one sharp) and 4/4 time. The melody is written on a single treble clef staff. It consists of four measures. The first measure contains a quarter note G4, a quarter note A4, a quarter note B4, and a quarter note C5. The second measure contains a quarter note D5, a quarter note E5, a quarter note F#5, and a quarter note G5. The third measure contains a half note G5, a quarter note F#5, a quarter note E5, and a quarter note D5. The fourth measure contains a quarter note C5, a quarter note B4, a quarter note A4, and a quarter note G4. The lyrics "A - men, a - men, a - men, a - men." are written below the notes, with hyphens indicating that each syllable is held across two measures. The piece concludes with a double bar line.

A - men, a - men, a - men, a - men.

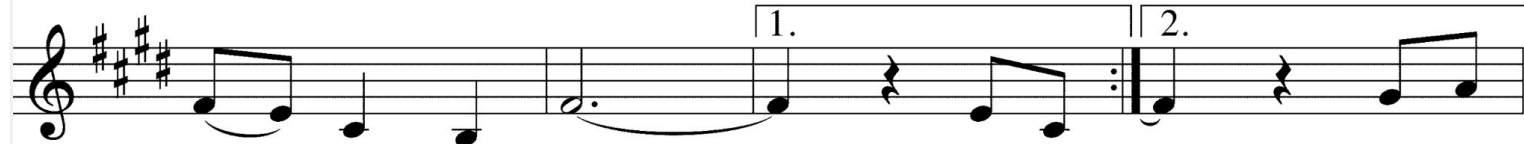
Music: *The Glendalough Mass*, Liam Lawton, © 2010, GIA Publications, Inc.



# Lamb of God



Lamb of God, you take a-way the sins of the world, have



mer - cy on us.

Lamb of

Lamb of



God, you take a - way the sins of the world,



grant us peace, grant us peace.



## SPIRITUAL COMMUNION PRAYER

Lord Jesus Christ,

You are the Bread of Life and the One True Vine.

I believe that You are truly present in this Most Holy Sacrament of the Altar.

I seek You. I worship and adore You.

Since I cannot receive You in the Eucharistic bread and wine, I pray, make me aware of your constant presence in my heart and soul that I may be more deeply united to You.

Help me to recognize and receive You throughout my day.

By Your all-powerful Holy Spirit, inspire me to be a witness of Your great Love.

I pray all this trusting You will never permit me to be separated from You, for You are our life, our peace, and our everlasting joy.

AMEN.

# AT THE NAME OF JESUS

Suzanne Toolan, RSM



## Refrain



At the name of Je - sus ev - 'ry knee shall bend,



at the name of Je - sus ev - 'ry knee shall bend.

## Verses



1. 'Tis our God's great plea - sure we should speak God's name,
2. Hum - bled for a sea - son, to re - ceive a name
3. Christ is tru - ly Sav - ior, Christ, the God a - dored,
4. In your hearts en - throne him, there let him sub - due
5. Sis - ters, broth - ers, Je - sus dwells with us a - gain

## to Refrain



1. who from the be - gin - ning was for - e'er the same.
2. from the lips of peo - ples un - to whom he came.
3. ev - er to be wor - shiped, ev - er - more a - dored.
4. all that is not ho - ly, all that is not true.
5. now to let his vi - sion o'er our hearts to reign.



## Jesus, Remember Me

Ostinato Refrain

Je - sus, re - mem - ber me when you come in - to your King - dom.  
*Spanish: Je - sús, re - cuér - da - me cuan - do en - tres en tu Rei - no.*  
*Polish: Je - zu, w kró - les - twie Twym wspom - nij na swo - je - go słu - gę.*

Je - sus, re - mem - ber me when you come in - to your King - dom.  
*Je - sús, re - cuér - da - me, cuan - do en - tres en tu Rei - no.*  
*Je - zu, w kró - les - twie Twym wspom - nij na swo - je - go słu - gę.*

Text: Luke 23:42; Taizé Community, 1981

Tune: Jacques Berthier, 1923-1994

© 1981, 2005, Les Presses de Taizé, GIA Publications, Inc., agent



All music for this Mass used with permission.

OneLicense licensing information:

Annual License, Category G

A-705038 for 12/03/21-12/02/22

Annual reprint with podcasting -G



**St. Mary Student Parish**  
Catholic Campus Ministry at the University of Michigan