

# St. Mary Student Parish

Catholic Campus Ministry at the University of Michigan

331 Thompson Street  
Ann Arbor, MI 48104  
734-663-0557

## Mass Schedule

### Sunday Mass

8:30 AM  
10:00 AM  
12:00 Noon  
2:00 PM (Spanish)  
5:00 PM  
9:00 PM

### Daily Mass

**Mon-Thurs** 5:10 PM  
**Tue** Rosary after Mass  
**Wed** Adoration 6-10 PM  
**Fri** 12:10 PM

## Office Hours

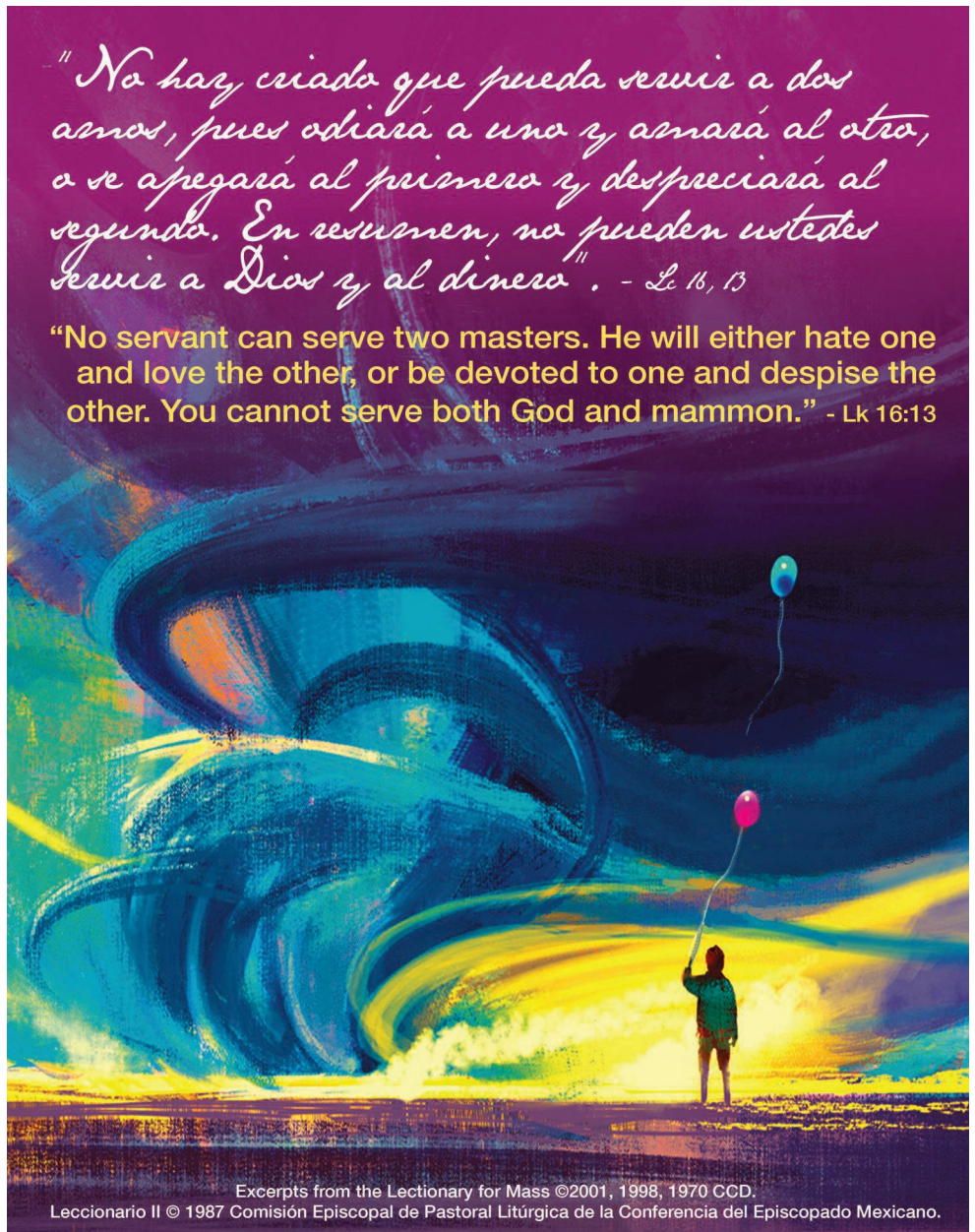
**Sun** 8:00 AM-9:00 PM  
**Mon** 9:00 AM-9:00 PM  
**Tue** 9:00 AM-9:00 PM  
**Wed** 9:00 AM-9:00 PM  
**Thurs** 9:00 AM-9:00 PM  
**Fri** 9:00 AM-5:00 PM  
**Sat** 12:00 PM-3:00 PM

## Sacrament of Reconciliation

**Wednesday** after the  
5:10 PM Mass  
**Sunday** at 7:30 PM  
or by appointment

*"No hay criado que pueda servir a dos amos, pues odia a uno y amará al otro, o se apegará al primero y despreciará al segundo. En resumen, no pueden ustedes servir a Dios y al dinero". - Lc. 16, 13*

**"No servant can serve two masters. He will either hate one and love the other, or be devoted to one and despise the other. You cannot serve both God and mammon."** - Lk 16:13



Excerpts from the Lectionary for Mass ©2001, 1998, 1970 CCD.  
Leccionario II © 1987 Comisión Episcopal de Pastoral Litúrgica de la Conferencia del Episcopado Mexicano.

## Small Church Communities & Busy Person Retreat

by *Elise Huber, Campus Ministry Associate*

*"I ask that supplications, prayers, petitions, and thanksgivings be offered for everyone...that we may lead a quiet and tranquil life in all devotion and dignity."*

- 1 Timothy 2:1-2



I want to lead a quiet and tranquil life. That sounds glorious and peaceful! But is that reality? In the busyness of our lives, we are constantly running and working. Go. Go. Go. Our schedules are packed, calendars full. It is easy to get distracted and lose sight of life that the Lord is calling us to. We are called to pray, called to faith, called to peace and called to follow our one true God. But that is certainly not easy.

Busy is an understatement to describe the past few weeks. The students have all come back and wonderful events are happening! But all of that takes planning and work. I found myself getting pulled into answering emails, scheduling meetings back to back and getting overwhelmed by my long to-do list. My schedule filled up quickly, and after a few days I realized that I never scheduled time to pray. I was running on empty because I was not filling my soul with the grace and presence of our Lord. I am not strong enough to do this on my own; I am poor. We all are poor. We all need Christ and thirst for His grace to get us through.

In the weakness I felt, I turned back to the Lord. I gave myself time to pray, time to be filled. And by His grace alone, I can continue. I can do the work that I am being called to do and learn to depend on Him. After all, the Lord wants us to have to have a peaceful and tranquil life. He calls us His Beloved and yearns for us to open ourselves to Him!

Do you hear the Lord's call? Do you need the time to be filled? Do you want to make time to pray and let the Lord enter more fully into your life? This fall, it's exciting that St. Mary's wants to help us all make time for Christ! Consider joining a Small Church Community (SCC) or the Busy Person Retreat (BPR). SCC's offer the opportunity to gather with a community centered around authentic conversations, real relationships, and restoring faith. The BPR allows undergraduates, graduates and young professionals to make time for God in the midst of our regular hectic schedules. With individual prayer, we bring the joys and concerns of daily life into conversation with Jesus and a spiritual companion. I have participated in both of these programs many times before and they always help me to make time for the Lord. The grace that I receive in return brings me closer to leading "a quiet and tranquil life in all devotion and dignity."

## & Small Church Communities Busy Person Retreat

*Are you wanting to deepen your faith? Are you stuck in your prayer life? Do you want to journey with others towards Christ?* Consider joining a Small Church Community (SCC) or the Busy Person Retreat (BPR). SCC's offer the opportunity to gather with a community centered around authentic conversations, real relationships, and restoring faith. Groups meet once a week for 90 minutes to reflect and discuss the readings for the upcoming Sunday. There is a group for everyone and every need.

SCC sign-up: <https://goo.gl/forms/qahCqYDMK6y85oiC3>

The BPR, for students, grad students and young professionals, allows you to make time for God in the midst of your regular hectic schedule. Bring the joys and concerns of your daily life into conversation with Jesus and a spiritual companion. Invite the Holy Spirit into your decision making and all aspects of your life. Retreatants commit to 15 minutes of individual daily prayer and 30-45 minutes of conversation each week with a spiritual companion.

BPR sign-up: <https://goo.gl/forms/xhh5CqT4h9yhOiv02>

Contact *Elise Huber*  
[ehuber@smspnewman.org](mailto:ehuber@smspnewman.org)



## Coffee & Donuts Sunday, Sept. 18

Please join us in  
Newman Hall after the

10:00 am Mass for hot coffee, a delicious donut, and time spent with friends and family. All are welcome!

## REGISTER NOW!

Whether you've celebrated mass with us for 20 years or this is your first mass with us, we invite all families and individuals to register (or re-register) with St. Mary. It's been 4 years since our last parish-wide registration, so we would like to take this opportunity to update your records and offer information on relevant ministries and programs.

Contact cards are available this weekend at the church entrances. Fill out this brief card and drop in the collection basket or drop off at the front office. Alternatively, you can also register online at our website:

<http://www.stmarystudentparish.org/join/>

**Why register?** It is our call from God to make available to our members the sacraments, religious education, and spiritual support whether it is a good period in your life or a difficult time. We also want to provide opportunities for all members to live their baptismal call by providing opportunities to get involved in ministry and service.

**As an added incentive, we will also be entering each individual or family that completes registration into a raffle for one of several great prizes, including an iPad.**

You can also visit our website to register: [http://](http://www.stmarystudentparish.org/join/)

[www.stmarystudentparish.org/join/](http://www.stmarystudentparish.org/join/) A limited number of paper copies are also available in the main office.

## Lost & Found

If you have misplaced items while at church, we may have them waiting for you in the parish office! Please stop by the office to check the Lost and Found box. All items not claimed by the last Sunday of every month will be donated.

Thank you.

## Catechesis of the Good Shepherd

Looking for a way to help your young child grow in relationship with God? Catechesis of the Good Shepherd (CGS) is a Montessori-based approach to the religious formation of children, rooted in Sacred Scripture, Liturgy, and respect for the child's rich relationship with God.

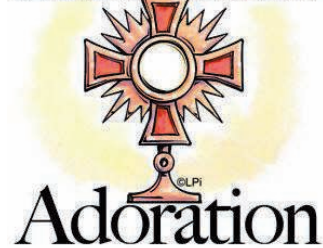
Central to CGS is the Atrium, a room containing beautiful materials that focus the child's attention on key scripture passages or liturgical moments. After an introduction by the catechist, the children are invited to work with a material on their own to continue their meditation. Because children learn by using their hands, working with materials allows them to enter more deeply into meditation, nurturing their relationship with God.

We invite children ages 3-5 years who are either in preschool or young 5s programs to participate in our CGS Atrium. This faith formation opportunity will be held once a month starting September 25 after the 10 AM Mass from 11:15 AM-12:45 PM. Materials cost is \$35 per child for the year and scholarships are available.

*If you are interested in enrolling your child or would like more information about this program please contact Katie Baidel and Maria Laberteaux at [smsp.cgs@gmail.com](mailto:smsp.cgs@gmail.com)*



## Eucharistic



## Wednesdays from 6-10 PM

Eucharistic Adoration will take place in the church every Wednesday during the academic year. It is a time to reflect and pray quietly before the Lord. People are invited to come when they can and stay as long as they like.

To ensure that someone is always with the Eucharist, people can sign up for time slots in the office or online: <http://www.stmarystudentparish.org/worship/devotions-special-services/>

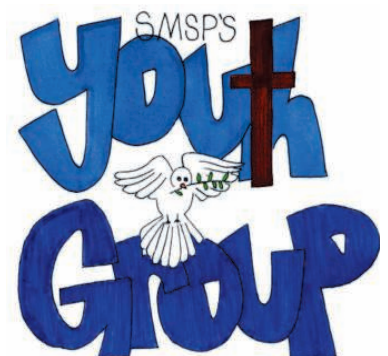
*For more information, please contact Bret Patterson [bretapat@umich.edu](mailto:bretapat@umich.edu)*

## Ice Cream Social

Sunday, Sept 25  
from 3-5 PM

If you're looking for a place where you can combine faith and fun while making friends you should join our youth group. Our first meeting will be an Ice Cream Social with an ice cream sundae bar.

For more information or questions contact: [Adam Perry perryada@umich.edu](mailto:Adam Perry perryada@umich.edu)





## Catholic Thinkers Book Club

All members of the parish are invited to meet one Tuesday a month from 7:00-8:30 pm in the Loyola Room to read and discuss selected great books by Catholic and other spiritual writers.

### The fall readings include:

- September 27: The Gift of Years by Joan Chittister
- October 25: Saint Thomas Aquinas: The 'Dumb Ox' by G.K. Chesterton
- November 22: The Life You Save May be Your Own (first half) by Paul Elie
- December 20: The Life You Save May be Your Own (second half) by Paul Elie

For more information, please contact Andy Hoffman at [ajhoff@umich.edu](mailto:ajhoff@umich.edu) or 734.763.9455

## Small Church Communities

Are you wanting to deepen your faith? Are you stuck in your prayer life? Do you want to journey with others towards Christ? Consider joining a Small Church Community (SCC). SCC's offer the opportunity to gather with a community centered around authentic conversations, real relationships, and restoring faith. Groups meet once a week for 90 minutes to reflect and discuss the readings for the upcoming Sunday. There is a group for everyone and every need.

SCC sign-up: <https://goo.gl/forms/qahCqYDMK6y85oiC3>

Contact Elise Huber [ehuber@smspnewman.org](mailto:ehuber@smspnewman.org)



## Parish Bible Study

Mondays at 7:00 pm

Our Catholic faith teaches that God is alive in the Scriptures. Come discover the Word with us. We practice scripture-based faith sharing in a small discussion group. Discussions are guided by church-approved commentaries, question guides, and the Catechism of the Catholic Church. We meet Mondays at 7 pm.

For further information, please contact Kathy Ann Moilanen 734.668.7437

## GRADUATE STUDENT/YOUNG PROFESSIONAL GROUP



worship, connect, and enjoy a delicious dinner at St. Mary with the grad/yp group!  
Mondays Sept26 Oct24 Nov28

For more information about the Grad/YP group or to be added to our email list, contact the Grad/YP lead team [smsp.grads.lead@umich.edu](mailto:smsp.grads.lead@umich.edu) or Fr. Joe at [jwagner@smspnewman.org](mailto:jwagner@smspnewman.org)

COMMUNITY | PRAYER & WORSHIP | SERVICE | SPIRITUAL FORMATION



singing socials service  
spirituality  
snacks sharing studying stories

# UNDERGRAD STUDENT EVENTS

## Ig.nite *Thursdays*

*Dinner Topic: "Who is ready for stability? Am I right?" by Abbie Scheske, 2016 UM graduate & Registered Nurse at Saint Joseph Mercy Health System*



St. Ignatius told his fellow Jesuits to "Go forth and set the world on fire."

Our undergraduate-led ministry draws its inspiration from Ignatius with a dual purpose: to welcome students into the parish, bringing them together as an undergraduate community through the sharing of a meal, and allowing them to engage with faith as it interacts in their everyday lives as college students. We meet every Thursday of the academic year (except holidays).

Contact Jenny [jline@smspnewman.org](mailto:jline@smspnewman.org)

### *On the menu this week:*

**Bowl Night!**  
Make Your Own Rice or Noodle Bowls. Lots to choose from!  
Peaches and Cream Slab Pie

## spend sunday nights at smsp

- ♦ Enjoy snacks in Newman Lounge from 6-9 PM on Sunday!
- ♦ Evening Masses at 5 & 9 PM
- ♦ Confessions at 7:30 PM
- ♦ Open until midnight for students Sunday-Thursday

*Save the Date*

## Alternative Spring Break (ASB) Information Night

October 5  
from 8-9pm



**FALL UNDERGRAD RETREAT**

**OCTOBER 7<sup>TH</sup>-9<sup>TH</sup>**

year-round faith sharing *just for undergrads*

**NO COMMITMENT** drop-in each week

three sessions **Sunday Tuesday Thursday**

**SHARE YOUR FAITH** dive into the Gospel

# RESTORE



**Starting Sunday, Sept. 18 from 3-5 pm**

All students and resident parishioners are invited to the Newman Hall kitchen to bake cookies and bars for upcoming SMSP events. These delicious treats will be added to the freezer and will be available to any group meeting at SMSP. Everything provided, just bring yourself. We will usually meet 3rd Sunday of the month.

No experience necessary. Taste testing required!

For more information, please contact Susan at [smaulb@umich.edu](mailto:smaulb@umich.edu)

## St. Mary's Discussion Group

St. Mary's Discussion Group meets one Sunday a month from 3– 5 PM in Donnelly Hall to discuss current topics of interest and to offer support to the parish. Socializing begins at 3 PM with snacks and beverages. Discussion begins at 3:30 PM.

New members are warmly welcomed and meetings are open to parish members and guests.

For more information, contact [Sherry Warden](mailto:Sherry.Warden@umich.edu) 734.663.8818.

## Baptism Class

9/26, 10/31, 11/14 & 12/19

YOU NEED ONLY TO ATTEND ONE CLASS

We offer an infant baptism class in both English and Spanish once a month on a Monday night from 7-8 PM. Information packets are available in the Parish Office and should be picked up at least a week prior to the class date.

Contact Carol for more information at [ckonczal@umich.edu](mailto:ckonczal@umich.edu)

## Born for Joy *Mondays at 7 pm*

A 12-step recovery group for men (ages 18+), who struggle with sexual acting out/pornography and are sincerely looking for hope and help in a community of fellow strugglers. Structured discussions are led by an experienced leader, offering times for listening and sharing. Discern, discover, and understand your struggles. Find God already helping you, and recover your joy. Primarily for students and young men. (Other men welcome as well.) Not for the curious, researchers, reporters. Please be courteous and stay away.

Visit [www.saa-recovery.org](http://www.saa-recovery.org) or contact Fr. Ben for more information.

## GET BAKED

Sundays from 3-5 pm starting Sept. 18

All students and resident parishioners are invited to the Newman Hall kitchen to bake cookies and bars for upcoming SMSP events. These delicious treats will be added to the freezer and will be available to any group meeting at SMSP. Everything provided, just bring yourself. We will usually meet 3rd Sunday of the month. No experience necessary. Taste testing required!

Contact Susan at [smaulb@umich.edu](mailto:smaulb@umich.edu)

## Teaching & Mentorship Opportunities

We invite all undergraduate and grad students to consider opportunities to teach and mentor others at SMSP. Teaching opportunities include a variety of catechism programs where you can share your faith with the youth of our parish, as well as the opportunity to teach English to non-native speakers through the English as a Second Language Program.

### CHILDREN'S LITURGY OF THE WORD CATECHIST

One Sunday each month you will prepare a liturgical celebration for a small group of children that takes place during the 10:00 AM Sunday mass. Materials are provided.

Lori Feiler [lfeiler@smspnewman.org](mailto:lfeiler@smspnewman.org)

### FAMILY FAITH FORMATION CATECHIST

One Sunday each month (October – April) you will instruct a grade specific group of children in the foundations of our faith. Class time will include prayer, instruction, and community building. We will also gather for monthly training dinners (September-March) with fellow catechists.

Lori Feiler [lfeiler@smspnewman.org](mailto:lfeiler@smspnewman.org)

### CONFIRMATION CATECHIST

Two Sundays each month 3:15-4:45 PM you will attend the confirmation class and assist in small group facilitation with occasional presentations and prayer planning. Catechists gather at 2:15pm on teaching dates to pray and review the session lesson plan.

Rita Zyber [rzyber@smspnewman.org](mailto:rzyber@smspnewman.org)

### HISPANIC/LATINO CATECHISM PROGRAM CATECHIST

Two Sundays each month 3:15 – 4:45 PM you will instruct a grade specific group of children in the foundations of our faith. Class time will include prayer, instruction, and community building. Spanish language skills are helpful but not required. Some lesson planning time required outside of class time.

Leonor Castillo Kromis [pkromis@umich.edu](mailto:pkromis@umich.edu)

### HISPANIC/LATINO MINISTRY CHILDREN'S LITURGY OF THE WORD CATECHIST

One Sunday each month you will prepare a liturgical celebration for a small group of children that takes place during the 2:00 PM Sunday mass. Beginner Spanish skills are requested.

Leonor Castillo Kromis [pkromis@umich.edu](mailto:pkromis@umich.edu)

### ENGLISH AS A SECOND LANGUAGE PROGRAM

Every Sunday from 12:45-1:45PM, but the level of commitment is flexible. You will use the time each week to work one-on-one with adults that want to practice their English skills. Minimal lesson planning time required outside of class time. While moderate proficiency in Spanish is preferred, it is not required.

Leonor Castillo Kromis [pkromis@umich.edu](mailto:pkromis@umich.edu)

# HELP WANTED

*Would you like to use your gifts & talents to support women facing unexpected Pregnancies?*

*We would love your help! **ArborWoman Pregnancy Center** is looking for pro-life people to fill both staff and volunteer positions*

**CLIENT SERVICES COORDINATOR:**

(paid staff position, 6-20 hours/week)

Support, direct, and evaluate the counseling services of ArborWoman and the work of the volunteers.

Must possess a degree in counseling or social work and a license in good standing with the State of Michigan.

Must express a sincere desire to reach out with compassion, assistance, and truth to abortion-vulnerable women.

Must have excellent leadership, management and communication skills, as well as basic computer skills.

One to two years of counseling experience is preferred.

*To apply, send cover letter, resume, and 3 references to [pearle@arborwoman.com](mailto:pearle@arborwoman.com).*

*Resumes must be received no later than Friday, September 30, 2016.*

**VOLUNTEER POSITION OPENINGS:**

—**Nurses & Sonographers**-must have current Michigan license.

—**Pregnancy Counselors**-must have an aptitude for or background in counseling.

—**SleepCare Program Volunteers**-to follow up with participants via phone and/or email.

—**BabyCare Program Coordinator**-to manage our county-wide emergency baby resources program in conjunction with Hope Clinic in Ypsilanti.

—**Janitorial Volunteers**-to clean our facility on a weekly or bi-weekly basis.



**HELP US REACH OUR GOAL!**

**Grand total as of August 24 is**  
**\$59,912.61**  
**which is approximately**  
**81.5 % of our goal of \$73,468.**

*Over the past few weeks, we've received many generous donations for the Diocesan Services Appeal. Your generosity makes a huge difference here in our community, but it also reaches far beyond to those in need throughout the Lansing diocese. If you are still prayerfully discerning your 2016 DSA gift, we invite you to make your gift over the next few weeks by giving online at [stmarystudentparish.org/give](http://stmarystudentparish.org/give) or by simply dropping off a check with 2016 DSA noted in the memo. We need your help to reach our goal. Thank you for your unwavering support of our parish and diocese.*

**Are You Drawn to the Person of St. Francis and the Franciscan Spirit of Peace & Justice?**

If so, you might have a vocation in the Secular Franciscan Order, a lay order of the Church founded by St. Francis for people who are married or single.

If you are interested in learning more about lay Franciscans, please join us for an **October Introductory Meeting at St. Francis of Assisi Church in Ann Arbor on Sunday, Oct.9 at 2:00 p.m.** at St Francis of Assisi Catholic School music room (Entrance on St. Francis Dr.), 2270 E Stadium Blvd, Ann Arbor MI 48104

Please contact either Eleanor at 734-434-8161 or Marianne at 734-428-8578 for any questions. Visit the Secular Franciscans at [www.nafra-sfo.org](http://www.nafra-sfo.org)

**One-Day Retreat** You're invited to a one-day retreat at

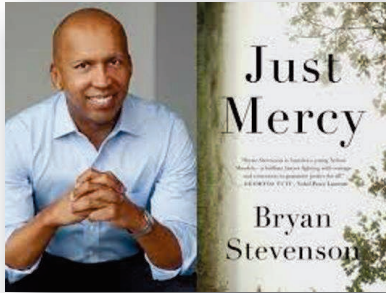
St. Francis Retreat Center in DeWitt on "The Wisdom of St. Therese the Little Flower." Come explore, pray, and learn the profound wisdom of this modern day saint. Let her "little way of spiritual childhood" draw you more deeply into the merciful heart of Jesus.

Its being offered twice: Saturday, October 8 and Monday, October 17. Both from 9:30am-3:30pm including Mass, morning snacks, lunch and materials. The cost is \$65. Directed by Tony Sperendi. Register at the retreat center 517-669-8321 or [www.stfrancis.ws](http://www.stfrancis.ws).

**Weekly Offering Report as of**

<b>Weekly Budget Goal</b>	<b>\$20,650.00</b>	<b>Annual Budget Goal</b>	<b>\$1,000,000.00</b>
Sunday 9/11/2016 (Week 11)	\$16,713.81	Fiscal Year-to-Date Goal	\$203,300.00
Above (Below) Weekly Goal	(\$3,936.19)	Amount Collected YTD	\$183,897.78
<b>Special and Holy Day Collections:</b>		Above (Below) YTD Goal	<b>(\$19,402.22)</b>

# SOCIAL JUSTICE MINISTRY EVENTS



The Social Justice Ministry at St. Mary's invites you to participate in a parish-wide shared reading program: **BIG READ SMSP**. Inspired by similar programs around the country, we'd like our parish to have a shared reading experience that challenges us to confront a social justice issue, and share dialogue with one another about how we can work together for peace and change as we continue to engage in this Year of Mercy.

Our selection for Fall 2016 is Bryan Stevenson's 'Just Mercy', a powerful true story about the potential for mercy to redeem us, and a call to fix our broken system of justice. Copies of the book will be available for you to pick up and keep, share, or return beginning this Sunday in the parish office. Shared dialogue and reflection experiences will begin in October.

## Celebrate the Jubilee Year of Mercy

Restorative Justice is **repair**: crime is more than breaking the law but causes harm to people, relationships, and the community. Justice requires repairing that harm.

Restorative Justice is **encounter**: all those most affected by the crime should be allowed to participate in its resolution. It is about listening to the other.

Restorative Justice is **transformation**: people, relationships, and communities are often fundamentally changed. Responsibility is accepted, amends are made, and reconciliation and hope can be found.

*Source: Center for Justice and Reconciliation- a project of Prison Fellowship International*

### A community conversation about restorative justice THURSDAY, SEPTEMBER 29TH AT 7:30 PM

The evening will include:

- A performance of *Tough Case* by David Craig, a reader theatre's presentation of the restorative justice process.
- Background on our local court system from Washtenaw County Circuit Court Judge Darlene A. O'Brien
- Opportunity for questions and conversation
- A kick-off to our BIG READ SMSP of *Just Mercy* by Bryan Stevenson

Contact **Laura Padalino** ([laura.padalino@gmail.com](mailto:laura.padalino@gmail.com))  
or **Bill Alt** ([walt@smspnewman.org](mailto:walt@smspnewman.org)) for more information.

## CROP HUNGER WALK

ENDING HUNGER ONE STEP AT A TIME

### Join us for the 42<sup>nd</sup> ANNUAL CROP HUNGER WALK Sunday, Sept. 25, 2016

Help raise awareness and money to alleviate hunger by joining the St. Mary Student Parish CROP Walk team. Sponsored by the Interfaith Council for Peace and Justice, this annual ecumenical, interfaith walk raises funds for local as well as international hunger fighting agencies. Donors can designate Catholic Relief Services as a recipient if desired.

Registration for the walk begins at 1pm, send-off service and walk begins at 2pm at Trinity Evangelical Lutheran Church at 1400 W. Stadium in Ann Arbor.

To join our team, look for the St. Mary Student Parish team on the [hunger.cwsglobal.org](http://hunger.cwsglobal.org) site or follow the link on the SMSP website. Paper envelopes are also available in the parish office for those who wish to fund-raise in person.

Can't walk? Please consider supporting our team with a donation via the website or drop off a check in the parish office (made out to CWS/CROP). Thanks for your support and prayers. Hope to see you at the Walk on Sun., Sept. 25th.

*For more information, contact Lisa Hirsch at  
[mcdfam5@sbcglobal.net](mailto:mcdfam5@sbcglobal.net) or 734-741-1235.*

## FEED THE A2 HOMELESS

### Sundays @ 5:00PM

St Mary's Social Justice Ministry is seeking volunteers to help feed the homeless in Ann Arbor. We are committed to providing a Sunday meal quarterly for the former Camp Take Notice (CTN) residents that meet weekly at Mercy House for dinner. Meal format is set and sign-up is done electronically.

Sunday meal opportunities are scheduled for 9/25/16, 12/18/16, and 2/26/17.

#### How to Volunteer:

1. Provide a specific food donation such as an entree or dessert
2. Provide staple donations such as napkins, water bottles, etc.
3. Provide Monetary support for the purchase of needed items
4. Provide transportation and/or serve food on the given day
5. Provide help in coordination of the donations

*Please contact Erin at [5Telemaco@comcast.net](mailto:5Telemaco@comcast.net)*



## MASS INTENTIONS: SEPT. 18-25

### SUNDAY, SEPTEMBER 18— Twenty-fifth Sunday in Ordinary Time

8:30 AM	Mass for	Nicholina Jones
10:00 AM	Mass for	People of the Parish
12:00 PM	Mass for	+Gus Bartoli
2:00 PM	Mass for	+Cristobal Acosta
5:00 PM	Mass for	+Jameela Sesi
9:00 PM	Mass for	+Becky Hilger

### MONDAY, SEPTEMBER 19

5:10 PM	Mass for	Kim Wood
---------	----------	----------

### TUESDAY, SEPTEMBER 20

5:10 PM	Mass for	+Boon-Aek Dejthamrong
---------	----------	-----------------------

### WEDNESDAY, SEPTEMBER 21

5:10 PM	Mass for	+Cheryl Grostic
---------	----------	-----------------

### THURSDAY, SEPTEMBER 22

5:10 PM	Mass for	+Thassanee Dejthamrong
---------	----------	------------------------

### FRIDAY, SEPTEMBER 23

12:10 PM	Mass for	Leona Fernandes
----------	----------	-----------------

### SUNDAY, SEPTEMBER 25— Twenty-sixth Sunday in Ordinary Time

8:30 AM	Mass for	+Julia Roy
10:00 AM	Mass for	People of the Parish
12:00 PM	Mass for	Bill & Marilyn Watkins
2:00 PM	Mass for	Geronimo Fulgencio
5:00 PM	Mass for	+Kim-Fung Wong & +Fung-Oi Wong
9:00 PM	Mass for	Catechists

## MEETINGS & EVENTS: SEPT. 18-25

### SUNDAY, SEPTEMBER 18

Children's Liturgy	10:15 AM	Newman Hall, Newman & Richard Rooms
Coffee & Donuts	11:00 AM	Newman Hall
ESL	12:45 PM	Newman Hall
Spanish Choir Practice	1:00 PM	Music Room
Hispanic Children's Liturgy	2:00 PM	Donnelly Hall
Get Baked at St. Mary	3:00 PM	Newman Kitchen
Confirmation	3:15 PM	Donnelly Hall
BIG/little Mixer	6:00 PM	Donnelly Hall
Ig.nite Lead Team	6:00 PM	Loyola Room
Grad/YP Lead Team	6:30 PM	Newman Room
SCC-Restore	7:00 PM	Rectory Lounge
Reconciliation	7:30 PM	Church

### MONDAY, SEPTEMBER 19

Finance Council with PPC	5:00 PM	Donnelly Hall
Centering Prayer	6:30 PM	Richard Room
Bible Study	7:00 PM	Newman Room
Born for Joy	7:00 PM	Monteith Room

### TUESDAY, SEPTEMBER 20

Pray the Rosary	5:45 PM	Church
LGBT Outreach Ministry	7:00 PM	Loyola Room

### WEDNESDAY, SEPTEMBER 21

Eucharistic Adoration	6:00 PM	Church
RCIA	7:00 PM	Donnelly Hall
Outreach Team Meeting	7:00 PM	Rectory Lounge

### THURSDAY, SEPTEMBER 22

Women of the Heart	10:15 AM	Donnelly Hall
Ig.nite	5:10 PM	Church, Newman Hall
SCC-Restore	7:30 PM	Newman Room

### FRIDAY, SEPTEMBER 23

VIRTUS Training	2:00 PM	Loyola Room
-----------------	---------	-------------

### SUNDAY, SEPTEMBER 25

Children's Liturgy	10:15 AM	Newman Hall, Newman & Richard Rooms
Catechesis /Good Shepherd	11:00 AM	Newman Room
ESL	12:45 PM	Newman Hall
Spanish Choir Practice	1:00 PM	Music Room
Hispanic Children's Liturgy	2:00 PM	Donnelly Hall
Hispanic Sacramental Prep	3:15 PM	Newman Hall+
Confirmation	3:15 PM	Donnelly Hall
Youth Group Ice Cream Soc.	3:00 PM	Courtyard
Catechist Retreat	5:00 PM	Donnelly Hall, Newman Hall
Ig.nite Lead Team	6:00 PM	Loyola Room
SCC-Restore	7:00 PM	Rectory Lounge
Reconciliation	7:30 PM	Church



Centering Prayer is a silent practice of prayer that rests on the faith that Christ is present within by his Holy Spirit. It is an excellent preparation for contemplative prayer, which is a grace or gift bestowed by God. Centering Prayer is an intentional openness to, or practice of "waiting" on God, encouraging the building of a more intimate relationship with Jesus and the movement of the Holy Spirit. It is rooted in centuries-old monastic prayer. The book, *Open Mind, Open Heart* by Father Thomas Keating, OCSO, is a good introduction. The first Monday of each month we listen to an introduction to centering prayer and then pray for 20 minutes. Otherwise, we typically sit and pray for two 20-minute sessions with a short meditative walk in between. All are welcome.

Contact Serena [serena68@comcast.net](mailto:serena68@comcast.net)

# ST. MARY STUDENT PARISH STAFF

## PASTORAL STAFF

734-663-0557

<b>Fr. Benjamin B. Hawley, S.J.</b> Pastor and Director of Catholic Campus Ministry	ext. 277	<a href="mailto:pastorstmarys@gmail.com">pastorstmarys@gmail.com</a>
<b>Fr. Dennis T. Dillon, S.J.</b> Pastoral Associate	ext. 246	<a href="mailto:dillonsj@umich.edu">dillonsj@umich.edu</a>
<b>Fr. Michael D. Rozier, S.J.</b> Pastoral Associate	ext. 0	<a href="mailto:mrozier@umich.edu">mrozier@umich.edu</a>
<b>Fr. Miguel Arrieta, S.J.</b> Pastoral Associate	ext. 234	<a href="mailto:marrieta@smspnewman.org">marrieta@smspnewman.org</a>
<b>Deacon Romolo Leone</b> Pastoral Associate	ext. 233	<a href="mailto:rleone@umich.edu">rleone@umich.edu</a>

## CAMPUS MINISTRY STAFF

<b>Fr. Joseph F. Wagner S.J.</b> Campus Minister	ext. 234	<a href="mailto:jwagner@smspnewman.org">jwagner@smspnewman.org</a>
<b>Jennifer Line</b> Campus Minister	ext. 223	<a href="mailto:jline@smspnewman.org">jline@smspnewman.org</a>
<b>William Alt</b> Campus Minister	ext. 235	<a href="mailto:walt@smspnewman.org">walt@smspnewman.org</a>
<b>Elise Huber</b> Campus Ministry Associate	ext. 252	<a href="mailto:ehuber@smspnewman.org">ehuber@smspnewman.org</a>
<b>Amy Ketner</b> Campus Ministry Associate	ext. 248	<a href="mailto:aketner@smspnewman.org">aketner@smspnewman.org</a>

## PARISH STAFF

<b>Lanette Mele</b> Office Manager and Liturgy Assistant	ext. 232	<a href="mailto:lemele@umich.edu">lemele@umich.edu</a>
<b>Carol Konczal</b> Receptionist and Administrative Assistant	ext. 226	<a href="mailto:ckonczal@umich.edu">ckonczal@umich.edu</a>
<b>Alicia Frenette</b> Controller	ext. 224	<a href="mailto:afrenette@smspnewman.org">afrenette@smspnewman.org</a>
<b>Susan Maulbetsch</b> Hospitality and Welcome Coordinator	ext. 229	<a href="mailto:smaulb@umich.edu">smaulb@umich.edu</a>
<b>Brittany Tobias</b> Stewardship and Communications Director	ext. 240	<a href="mailto:btobias@smspnewman.org">btobias@smspnewman.org</a>
<b>Anthony Mercurio</b> Stewardship Associate	ext. 243	<a href="mailto:amercurio@smspnewman.org">amercurio@smspnewman.org</a>
<b>Leonor Castillo Kromis</b> Hispanic/Latino Ministry Coordinator	ext. 221	<a href="mailto:pkromis@umich.edu">pkromis@umich.edu</a>
<b>Kristen Gowman</b> Bookkeeping Assistant	ext. 241	<a href="mailto:kgowman@smspnewman.org">kgowman@smspnewman.org</a>
<b>Lori Feiler</b> Family Ministry Program Coordinator	ext. 245	<a href="mailto:lfeiler@smspnewman.org">lfeiler@smspnewman.org</a>
<b>Karen Foster</b> Family Ministry Program Assistant	ext. 247	<a href="mailto:kfoster@smspnewman.org">kfoster@smspnewman.org</a>
<b>Rita Zyber</b> RCIA & Confirmation Coordinator	ext. 230	<a href="mailto:rzyber@smspnewman.org">rzyber@smspnewman.org</a>
<b>Paige Graham</b> Music Coordinator	ext. 0	<a href="mailto:pdgraham@umich.edu">pdgraham@umich.edu</a>
<b>Sue Walters</b> Database & Ministry Schedule Coordinator	ext. 239	<a href="mailto:swalters@smspnewman.org">swalters@smspnewman.org</a>
<b>George B. Lowrie, III</b> Stewardship Volunteer	ext. 222	<a href="mailto:stmarys@umich.edu">stmarys@umich.edu</a>
<b>Gary Pearce</b> Operations Manager	ext. 231	<a href="mailto:gpearce@smspnewman.org">gpearce@smspnewman.org</a>
<b>Dan Hankins</b> Custodian	ext. 0	<a href="mailto:dhankins@smspnewman.org">dhankins@smspnewman.org</a>
<b>Mark Deprest</b> Building Assistant	ext. 0	<a href="mailto:mdeprest@smspnewman.org">mdeprest@smspnewman.org</a>
<b>George Kasotakis</b> Custodial Assistant	ext. 0	<a href="mailto:gkasotakis@smspnewman.org">gkasotakis@smspnewman.org</a>

## STUDENT STAFF

Vanessa Geiger	Haley Goeckel	Emmamarie Haasl	Katelyn Johnson
Courtney Lambesis	Maggie Larin	Devin Nelson	Will Vandini

## PLEASE REMEMBER IN YOUR PRAYERS:

*Cristobel Acosta, Elpido Adrian, Marcelo Alvarez, Mariana Alvarez, Dee Ana, Joan Anderson, Geri Arnold, Kevin Arway, Newton Averion, Orlando Averion, Zenaida Averion, Jeanne Barry, Pat Battista, Jenn Belczak, Kim Benoit, Philip Bentley, Lauren Dittrich Bilyeu, Gary Boelstler, Doug Brannan, Joan Brown-Alexander, Molly Brueger, William Callahan, Bev Campbell, Celia Capay, Rick Chapman, Shenlin Chen, Hyun Sook Choi, Carol Clark, James Dali Clark, Betty Cleveland, Juan Contreras, Molly Cook, Janet Crew, Aimee Cruz, Irene DaDeppo, Ronald Dawson, Lori DeFour, Anna DenBoer, Simone Elizabeth Dysinger, Bonnie Dunkelburger, Nathalie Ertel, Dennis Farmer, Fr. John Ferone, S.J., Linda Frame, Martha Frame, Lydia Fulmer, Peter Gallucci, Cecelia Garcia, Javier Garcia, Leticia Garcia, Carmen Garduno Bonquillo, Juanita Gee, Debbie Gilbert, Henry Ginyard, Rosario Gonzalez, Ken Granke, Bethany Grates, Sophia and Senovia Guevara, Marianna Hann, Adam Heskett, Berta Herrera, Donovan Hickrod, Stephen Hosken, Bonnie Irvin, Roshney Jain, Alfred Juarez, David Johnson, Thor Johnson, Dan Karczewski, Ron Karczewski, David Kieras, Brandan Kirma, Kris Kolevar, Mary Koral, Jalene Kulhanek, Art Lamey, Bernice Lamey, Amira Lehavy, Alex Lichterman, Daniel Leung, Joan Lesneski, Daniel Lienert, Brianna Liker, Augustin Ronquillo Lopez, Maryjo Lum, Kathryn Marsh, Makayla Mayo, Suzanne Maciolek, Abby McDonough, Sarah McPharlin, Helen Meador, Steve Messiter, Irene Mike, Susan Morales, Christina Morton, Harrison Morton, Gina Murillo, Fred Murphy, Mary Natrella, Jan Olsavsky Kipp, Meghan O'Neil Kuebler, Joan Opiela, Antonio Osorio, Blythe Peltier, Joyce Ann Pethan, Elizabeth Pidgeon, Anne Piehl, Monica Pointer, Jake Powell, John Pridnia, Noah Purdy, Chester Pyzik, Irene Pyzik, Mario Ramos, Basillio Rodriguez, Isabel Rodriguez, Rowena Rodriguez, Melissa Roy, Minati Roy, Chad Schaber, Anita Schmitter, Eugene Schwartz, Therese Sheffield, Don Shelton, Joseph Slawski, Eddie Smith, Elmer Spreitzer, Mackenzie Stothers, Mary Swander, Joseph Sweetman, Gerald Tilson, Victoria Tomalia, Donna Turnmier, Robert Uriarte, Marco Victoriano, Pota Vlatos, Hayden Watkins, Nathaniel Watt, Lisa Wolf-Novak, Mary Yacu, Imelda Yap, Linda Zara, Kathy Zukowski*

### TO ADD OR REMOVE A NAME:

*Please email [stmarys@umich.edu](mailto:stmarys@umich.edu)  
or call the parish office 734-663-0557.*

# SUNDAY READINGS

## SEPTEMBER 18

### TWENTY-FIFTH SUNDAY IN ORDINARY TIME

Reading I	Amos	8:4-7
Psalms	Psalms	113:1-2, 4-8
Reading II	1 Timothy	2:1-8
Gospel	Luke	16:1-13

Amos Cries out against those who exploit the poor for the sake of extortion and greed. They seek to serve only themselves rather than the Lord. By giving ourselves to God rather than to money, we can truly pray with blameless hands for all those in need, especially the poor whom the Lord will raise up.

## SEPTEMBER 25

### TWENTY-SIXTH SUNDAY IN ORDINARY TIME

Reading I	Amos	6:1a, 4-7
Psalms	Psalms	146:7-10
Reading II	1 Timothy	6:11-16
Gospel	Luke	16:19-31

Amos condemns the complacency of the rich who seek only their own comfort. In his parable of the rich man and Lazarus, Jesus echoes Amos, exhorting those who have to share with those who have not. Self-sufficiency must never blind us to the needs of others. Only in this way do we keep God's commandments in integrity and in truth.

**PLEASE THANK  
OUR SPONSORS!**

This bulletin is furnished to the parish without charge.

The advertisements that appear completely defray all publishing costs with which the church would otherwise be burdened. Please patronize these sponsors as a thank you for their kind generosity.



**University Bank**  
Member FDIC  
NMLS #715685

**Making a Home Purchase?**  
Receive a 24-hour underwriting decision for residential loans\* when purchasing a home through our community bank.



**Stephen Lange Ranzini**  
President  
St. Mary's Parishioner  
ranzini@university-bank.com  
PHONE (734) 741-5858  
WEBSITE www.university-bank.com

**YOUR HOME TOWN INDEPENDENT BANK**  
2015 WASHTEAW AVENUE, ANN ARBOR  
\*All finance transactions and pre-approvals are subject to credit approval and acceptable appraisals.



**Family Matters**  
Handled with care and understanding


**NSS S&B**  
Kate Sharkey, Attorney and St. Mary's Parishioner

734 994-3000 | www.nsssb.com

**HELP PROTECT YOUR FAMILY**

With a home security system monitored by ADT professionals 24 hours a day, 7 days a week. As an added benefit, installing a Security System may qualify you for a Homeowners Insurance discount.

**CALL NOW! 1-888-331-6501**

**PROJECT MEDIA**

"Does your child watch TV? Are they 13-15 years old? Email [umprojectmedia@gmail.com](mailto:umprojectmedia@gmail.com) or call (734) 763-5146 to learn more about a paid study they may be eligible for.

IRB MED#: HUM00095596



**www.indoorcomfort.net**  
(734) 665-9860  
Since 1951  
**Our Name is Your Guarantee**



*Please support our advertisers and mention you saw their ad here.*



**KNIGHT'S**  
Downtown Ann Arbor  
600 East Liberty St • Ann Arbor  
**734.887.6899**  
[knightsrestaurants.com](http://knightsrestaurants.com)



**CatholicMatch Michigan**  
[CatholicMatch.com/MI](http://CatholicMatch.com/MI)



**JULIE SVINICKI**  
REALTOR • si-vi-ni-key


**Full-Time, Ann Arbor REALTOR®**  
734-358-7700 cell/text  
[Julie@JulieSvinicki.com](mailto:Julie@JulieSvinicki.com)  
[www.JulieSvinicki.com](http://www.JulieSvinicki.com)  
ABR, CSP, GREEN, CRS, CNE





662-1600 or  
boaa.com  
How can we  
help you? **Member FDIC**

**Norton's**  All Occasion Flowers • Plants • Cards  
Religious & Inspirational Gifts  
OWNER: TIM GALEA - PARISH MEMBER  
www.nortonsflowers.com • 734-434-2700  
Ann Arbor • 2558 W. Stadium at Jackson (9a-6p, Mon-Sat)  
Ypsilanti • 2900 Washtenaw (8a-7p, Mon-Sat, Sun 11a-3p)

**PJ's**  MARC TARAS • PARISHIONER  
**USED RECORDS AND CD'S**  
BUY - SELL & TRADE • LPs - CDs & DVDs  
MONDAY - SATURDAY 10 AM - 9 PM, SUNDAY 12 NOON - 8 PM  
617B PACKARD (UPSTAIRS ABOVE PASTRY PEDDLER) 663-3441

**Angelini & Associates**  Architects  
113 East Ann St.  
Ann Arbor, MI  
734.998.0735  
www.angeliniarchitects.com

**SPARROW MEATS**  
- MEAT CUTTING SINCE 1974 -  
734-769-2725 PRODUCE • 734-761-8175 MEAT  
407 N. FIFTH AVE • ANN ARBOR

sylvanlearning.com  Math - Algebra  
Robotics - Coding  
SAT / ACT Prep  
Study Skills  
Homework Help  
Reading - Writing  
Ann Arbor  
734-665-7323 Parishioner

See What's in Store!  
JEWELRY • ROSARIES • BOOKS  
AND MORE  
www.parishstore.com 

**Horton Plumbing and Remodeling**  1382 S Main St.  
Plymouth  
734-455-3332  
www.hortonplumbing.com  
24/7 EMERGENCY SERVICE

**THE ORIGINAL Cottage Inn**  
SPECIALTY ITALIAN FOODS  
512 E WILLIAM ST. • 663-3379  
- Across from St. Mary's -

**New York Pizza DePot**   
605 E. William  
Open Every Day! 10am-4am  
734-669-6973  
www.newyorkpizza-annarbor.com

**WEINGARTZ**  
EVERYTHING FROM LAWN TO SNOW  
ANN ARBOR • (734) 239-8200  
WWW.WEINGARTZ.COM

**K.C. RUNCIMAN LANDSCAPES**   
Serving Ann Arbor Since 1946  
LANDSCAPE DESIGN & CONSTRUCTION  
(734) 429-5200 • WWW.KCRUNCIMAN.COM

**AVAILABLE FOR A LIMITED TIME**  
**ADVERTISE YOUR BUSINESS HERE**  
Contact Judee Nelson to place an ad today!  
JNelson@4LPi.com or (800) 477-4574 x6319

**Mr. Handyman**  734-961-4879  
"For all of your home repair needs"  
On time. Done right.® www.myhandyman.com

**MUEHLIG FUNERAL CHAPEL**  
Serving Washtenaw County Since 1852  
- Advanced Planning -   
www.MuehligAnnArbor.com  
Find us on Facebook & Twitter  
Mgr. Clayne D. Frazer • G.M. Thomas Jensen  
403 S Fourth Ave • 663-3375

**PRECISION CLIMATE SERVICES, INC.**  
- Mechanical Contractor -  
www.precisionclimate.com  
734-994-1477  
PO BOX 48 • Pinckney  
Precisionclimate@att.net

**Emerson SCHOOL**   
Challenging and nurturing K-8 students so they love learning and thrive.  
Lisa Psarouthakis, Admissions Director  
lisap@emerson-school.org  
9 to 1 student to faculty ratio  
EMERSON-SCHOOL.ORG | 734-665-5662 | ANN ARBOR

**B3 CONSTRUCTION LLC**   
Commercial & Residential  
Licensed & Insured  
BRANDON PHEEGER  
Roofing Specialists Proficient with:  
Slate • Architectural Sheet Metal  
Shingles & Historic Restoration  
Free Estimates • (586) 855-5466  
Email: b3constructionllc@gmail.com

**NORTHSIDE GRILL**   
Serving Breakfast  
All Day, Every Day!  
Open 7am-3pm • 7 Days a Week  
"Where mornings become delicious"  
1015 Broadway  
995-0965

**ACE BARNES HARDWARE**  
**ACE Hardware** 2105 W STADIUM • 665-7555  
3352 WASHTENAW • 971-4555

"A Smile Is A Valuable Resource"  
**Shannon Norman-Kotre, DDS, PARISHIONER**  
2240 S. Huron Parkway • Ann Arbor  
(734) 677-2156  
www.kotreannarbordentist.com 